



TAMIMI PRE ENGINEERED BUILDINGS CO.
شركة التميمي للمباني الجاهزة

COMPANY PROFILE

Engineering Excellence. Innovating the Future.



BUILDING THE FUTURE WITH **EXCELLENCE**

Welcome to **Tamimi Pre-Engineered Buildings**, your trusted partner in modular steel construction. With over 30 years of expertise, we deliver durable, eco-friendly, and high-quality building solutions faster and more efficiently than traditional methods—without compromising on safety or sustainability.





TAMIMI PER

*Stronger, Faster, Smarter
Buildings for a Sustainable*

FUTURE.





OUR GENERAL MANAGER'S MESSAGE

At Tamimi Pre-Engineered Buildings (PEB), we are committed to redefining modern construction through innovative, high-quality, and sustainable building solutions.

With over 30 years of expertise, we specialize in delivering turnkey modular steel structures for residential, commercial, industrial, and public infrastructure projects—designed to meet international standards and align with Vision 2030.

Our success is driven by continuous investment in cutting-edge technology, enabling us to deliver efficient, durable, and eco-friendly structures at an unprecedented pace. From bespoke residential villas to large-scale infrastructure, our fully customizable solutions are designed to meet the evolving needs of our clients, ensuring durability, cost-effectiveness, and environmental responsibility.

GENERAL MANAGER'S MESSAGE

OUR GENERAL MANAGER'S MESSAGE

Sustainability is at the core of our mission. By incorporating energy-efficient systems, recyclable materials and advanced construction techniques like the Tunnel Formwork System, we not only optimize performance but also minimize environmental impact, setting new benchmarks in the industry.

With the trust of our valued partners, Tamimi PEB remains dedicated to shaping the future of construction in Saudi Arabia and beyond. Together, we build with purpose, innovation, and a commitment to excellence.

Amir Jar

GENERAL MANAGER, TAMIMI PEB



ABOUT US

Tamimi PEB with several years of experience, specializes in prefabricated buildings, manufacturing modular buildings for permanent mid-rise construction structures. Our company specializes in providing top-quality manufactured mid-rise construction solutions, utilizing our extensive knowledge and experience. We manufacture and provide turnkey completion of residential compounds and worker residences as well.

With our state of the art engineering and manufacturing, we can complete building projects in half the time as compared to conventional building methods. We have established a string reputation by being the only ones in Saudi Arabia, to be providing Modern Methods of Construction (MMC). We continuously review our processes and implement innovative techniques to improve our service standards and meet the needs of our clients. Our expertise and innovative approach have positioned us as the pioneer in the industry.





VISION

Our vision transcends simple building structures; we aspire to revolutionize the construction landscape by swiftly and affordably delivering impeccably designed pre-engineered buildings that define new standards for efficiency, sustainability, and excellence. With a focus on being the preferred exceeding expectations for major regional and global companies, we strive to set a benchmark for the industry, offering superior, environmentally conscious building solutions that resonate on a large scale. This dedication to excellence drives our every endeavor as we innovate, create, and build a future where modular buildings stand as the pinnacle of efficiency and sustainability, reshaping the world of construction one structure at a time

MISSION

At our core, we are exceeding expectations to pioneering the future of construction by leading the industry with our innovative, sustainable, and cost-effective pre-engineered building solutions. Our commitment is to empower our clients with structurally efficient, premium-quality buildings designed for success, specializing in the versatile dominion of modular construction.





OUR CORE VALUES

“Our Core Values
Matter—Quality,
Reliability, and
Innovation in Every
Structure.”



We offer comprehensive engineering solutions driven by a highly skilled in-house design team and expert consultants. Our designs adhere to both local and international standards, ensuring high-quality, sustainable construction. We are proud to support ongoing LEED-certified green building projects, contributing to environmentally responsible development.



INNOVATIVE CONSTRUCTION SOLUTIONS

Tamimi PEB excels in delivering superior construction services tailored to meet the unique demands of Saudi Arabia's construction landscape. Our capabilities include:

Modular Buildings Manufacturing:

State-of-the-art production facility for high-quality modular structures.

Concrete Tunnel Formwork Systems:

Efficient and durable construction solutions for large-scale projects.

Expert Project Management:

A seasoned team with extensive experience in delivering complex projects for esteemed clients, including PIF and Saudi ARAMCO.

“Redefining
Construction with
Smart, Fast, and
Future-Ready
Solutions.”



COMPREHENSIVE FACILITY MANAGEMENT SERVICES

Our fully integrated facility management solutions ensure the seamless operation and maintenance of residential, commercial, and industrial facilities. Services include:

Operations & Maintenance:

Proactive management to maintain facilities at peak efficiency.

Security Services:

Comprehensive security solutions to safeguard people and assets.

Waste Management:

Environmentally responsible waste disposal and recycling services.

Transportation:

Reliable and efficient transport services tailored to client needs.

Catering Services:

High-quality food and beverage solutions for various facilities.

Janitorial and Cleaning:

Comprehensive cleaning services for spotless, well-maintained environments.

OUR KEY PROJECTS

G + 5 BUILDING

Our G+5 building, located at Tamimi PEB's Jubail production facility, stands as a testament to modern construction innovation. It was built entirely using advanced volumetric modular methods, ensuring speed, precision, and sustainability. The design was crafted by Tamimi PEB's in-house team, with materials sourced locally within Saudi Arabia, reflecting our commitment to supporting the local economy and adhering to high-quality standards.

Key Project Highlights

Construction Start Date: 1st April 2024

Opening Date: 18th September 2024

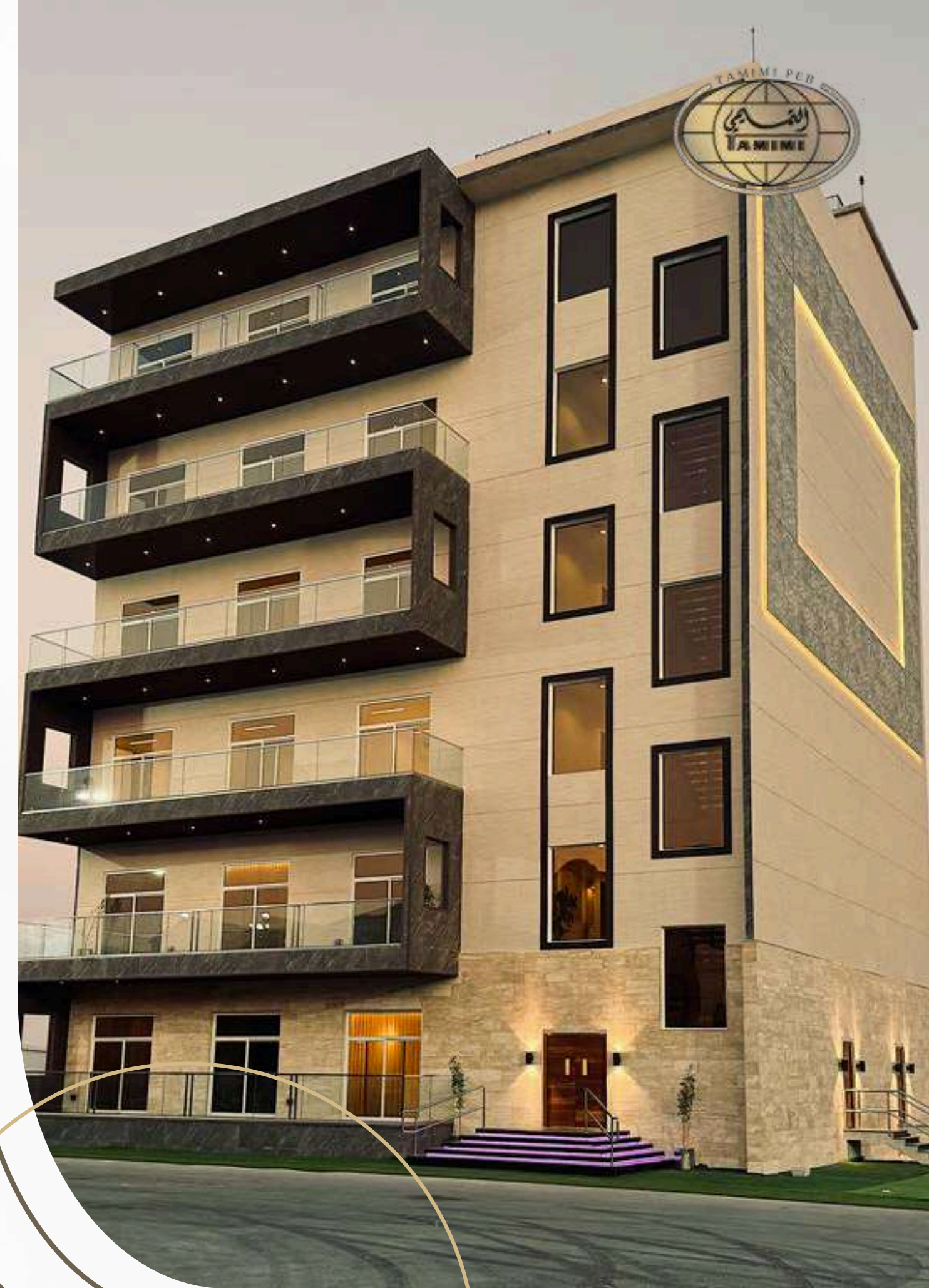
Completion Time (including design): 24 weeks

Building Height: Ground floor plus 5 levels (G+5)

Residential Capacity: Comprising 12 studio apartments and 12 one-bedroom apartments, totaling 24 units

Vertical Transportation: Equipped with 2 modern lifts for efficient access

Safety Features: Includes 2 emergency egress staircases to meet strict safety standards



OUR KEY PROJECTS

This project exemplifies our commitment to cutting-edge construction solutions, integrating modular technology to ensure efficiency, sustainability, and superior quality. By leveraging advanced prefabrication methods, we have accelerated project timelines while maintaining the highest standards of safety and durability. As we continue to push the boundaries of innovation, we remain dedicated to building the future—smarter, faster, and more sustainably.

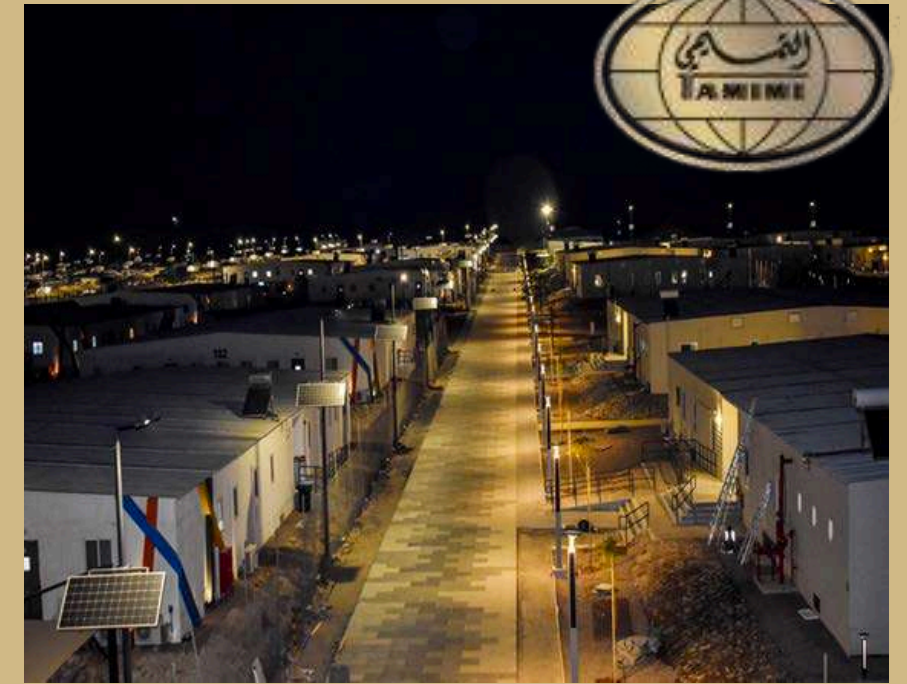
Key Project Highlights

Location: Sharma, KSA

Contract Type: Design & Build

Structure Type: Pre-Fabricated Modular Buildings

Scope of Work: Infrastructure works, building fabrication, installation, civil works, and foundation work.





OUR KEY PROJECTS

Spanning 856,000 m², this modular camp accommodates 20,000 personnel with prefabricated buildings, infrastructure, and essential services. Our scope includes construction, installation, operations, maintenance, and catering, ensuring a fully integrated and sustainable facility.

Key Project Highlights

Contract Type: Design, Build, Operate & Maintain

Structure Type: Pre-Fabricated Modular Camp Buildings

Scope of Work: Infrastructure Works, Building Fabrication & Installation, Civil Works, Foundation Work, Catering, and Facilities Management

Construction Area: 856,000 m²

Number of Occupants: 20,000 Personnel

NEOM CONSTRUCTION VILLAGE





OUR KEY PROJECTS

Covering 524,000 m², this modular camp is designed to accommodate 15,554 personnel with prefabricated buildings and essential infrastructure. Our scope includes construction, installation, civil works, and foundation, ensuring efficiency, durability, and sustainability.

Key Project Highlights

Contract Type: Design & Build

Structure Type: Pre-Fabricated Modular Camp Buildings

Scope of Work: Infrastructure Works, Building Fabrication & Installation, Civil Works, Foundation Work

Construction Area: 524,000m²

Number of Occupants: 15,554 Personal

AMAALA TRIPLE BAY CONSTRUCTION VILLAGE



OUR KEY PROJECTS

SAUDI ARAMCO HAWIYAH RESIDENTIAL CAMP

The Saudi Aramco Hawiyah Residential Camp is a state-of-the-art modular development designed to accommodate 12,500 personnel. Covering an area of 135,000m², the project includes comprehensive infrastructure, prefabricated building fabrication, installation, and civil works. With a focus on efficiency and sustainability, this design-build-operate project ensures a high-quality living environment while maintaining operational excellence.

Key Project Highlights

Contract Type: Design, Build, Operate & Maintenance

Structure Type: Pre-Fabricated Modular Camp Buildings

Scope of Work: Infrastructure Works, Building Fabrication & Installation, Civil Works, Foundation Work.

Construction Area: 135,000m²

Number of Occupants: 12,500 Personal



OUR KEY PROJECTS

Our commitment to innovation and efficiency is exemplified in this project, where we utilized advanced pre-fabricated modular construction techniques. Covering an area of 524,000m², this development provides high-quality infrastructure and accommodation for 15,554 personnel. From foundation work to building fabrication and installation, every aspect was executed with precision, ensuring durability, sustainability, and rapid deployment.

This project at the King Salman International Complex for Maritime reflects our expertise in delivering high-quality staff residential and office facilities. Spanning 25,000m², the development integrates modern infrastructure, ensuring optimal functionality and comfort. Through innovative construction techniques, we have created a sustainable and efficient environment tailored to meet operational demands.

MANAGEMENT OFFICE



KING SALMAN INTERNATIONAL COMPLEX FOR MARITIME





OUR KEY PROJECTS

Accommodation & Support Buildings





OUR KEY PROJECTS

Accommodation & Support Buildings



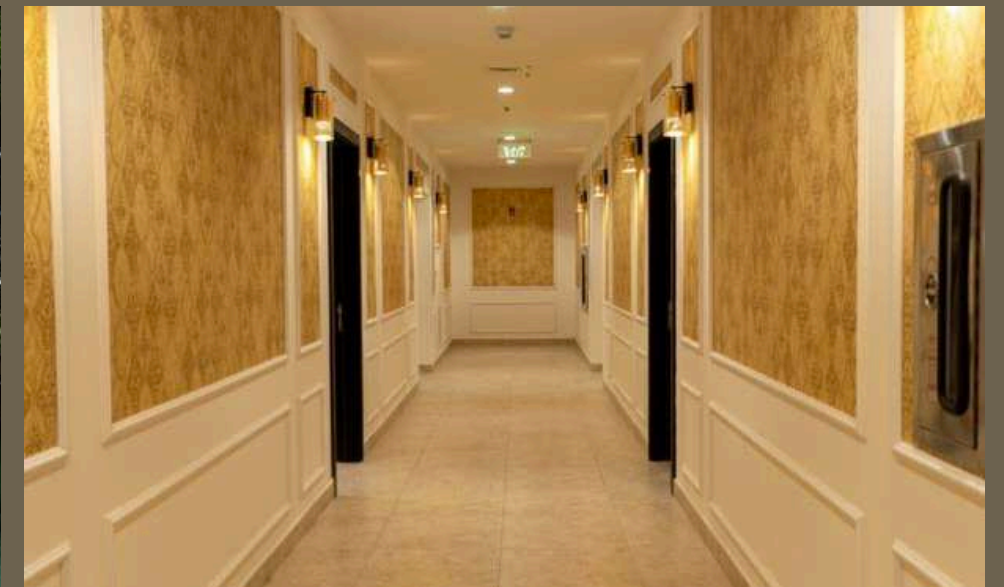
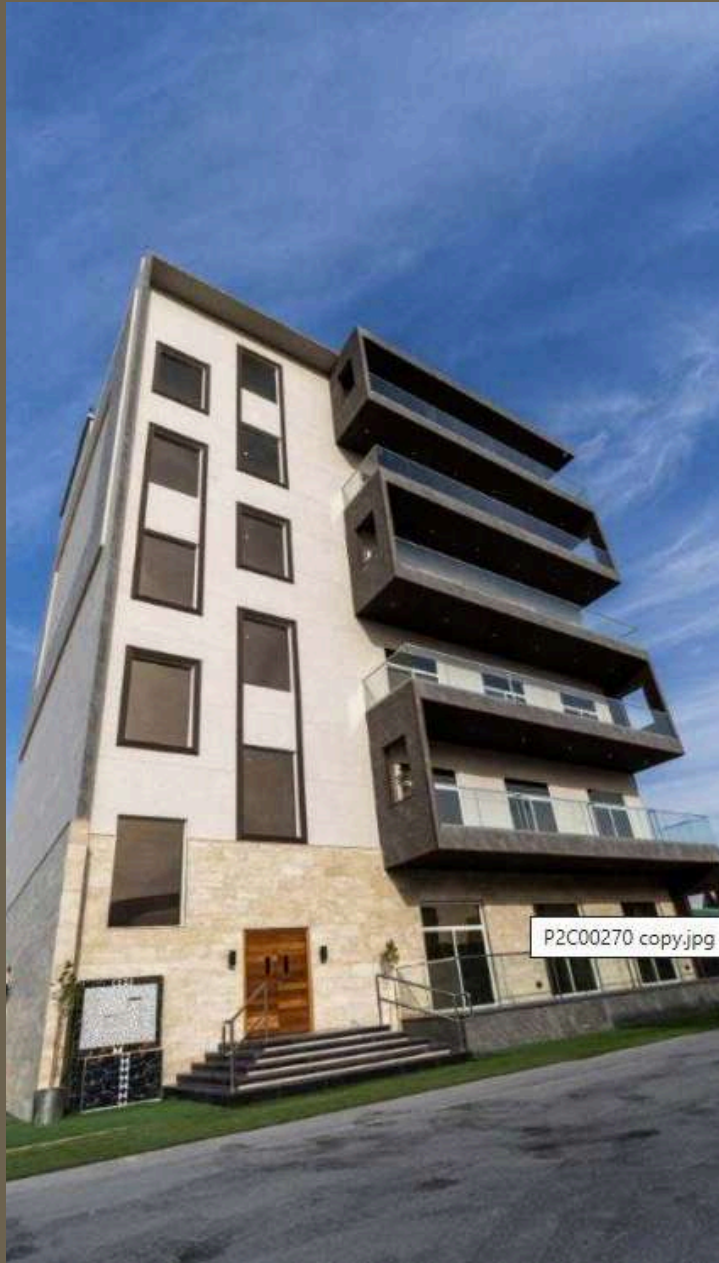


OUR KEY PROJECTS





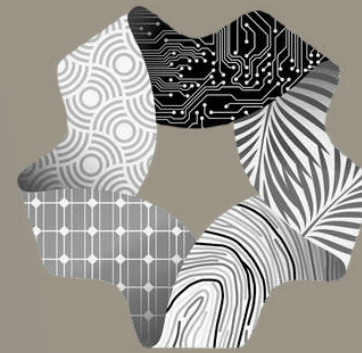
OUR KEY PROJECTS





MODULES MANUFACTURED
ACROSS KSA

48,000+



MODULES MANUFACTURED
FOR NEOM

23,670+



TOTAL AREA

5,840,444 M2



TECHNOLOGY & INNOVATION

ADVANCING CONSTRUCTION EXCELLENCE



Pre-Engineered Building (PEB) Systems

Modular steel structures for faster, cost-effective, and highly durable construction.



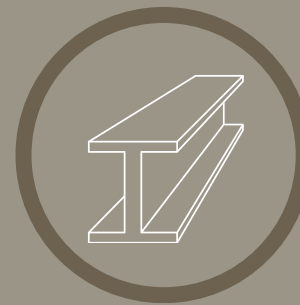
BIM (Building Information Modeling)

3D modeling for precise planning, design optimization, and seamless project execution.



TECHNOLOGY & INNOVATION

ADVANCING CONSTRUCTION EXCELLENCE



Automated Steel Fabrication

CNC and robotic welding ensure high-precision, defect-free components.



Smart Construction Monitoring

IoT-based sensors and smart meters track energy use, structural health, and project progress.



TECHNOLOGY & INNOVATION

ADVANCING CONSTRUCTION EXCELLENCE



Eco-Friendly Building Materials

Use of sustainable, non-toxic materials with minimal environmental impact.



Rapid Formwork & Casting Techniques

Advanced modular formwork enables faster concrete setting with superior finish quality.



TECHNOLOGY & INNOVATION

ADVANCING CONSTRUCTION EXCELLENCE



3D Printing in Construction

Reduces material waste and accelerates custom component manufacturing.



Advanced Insulation & Energy-Efficient Systems

High-performance insulation materials and smart HVAC systems for optimal energy savings.

PIONEERING PROJECTS

TECHNOLOGY & INNOVATION





PIONEERING PROJECTS

TECHNOLOGY & INNOVATION





OUR EXECUTION PLAN

Foundation & Threshold Setup

Steel angle thresholds and concrete stoppers are placed, ensuring accurate dimensions before casting.

Reinforcement & Casting

Wall reinforcement is installed, and concrete is poured for a strong structure.

MEP & Formwork

Electrical and plumbing accessories are integrated, followed by modular formwork setup.

Pouring & Finishing

Concrete is poured, formwork is removed after 24 hours, and surfaces are ready for finishing.



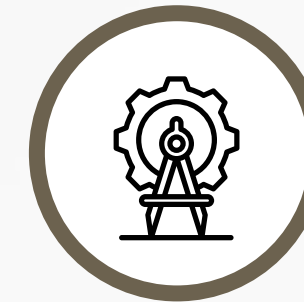


OUR COMMITMENT TO QUALITY

At Tamimi PEB, quality is the foundation of everything we build. From premium materials to precise execution, we ensure durability, safety, and excellence in every project. Our rigorous standards and innovative approach guarantee structures that stand the test of time.



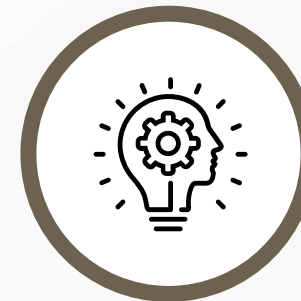
Premium
Materials



Precision
Engineering



Rigorous
Quality Control



Innovation
& **Efficiency**



Safety
First



Sustainable
Solutions



OUR SUSTAINABILITY

At Tamimi PEB, sustainability is at the core of our construction philosophy. We integrate eco-friendly practices and advanced technologies to minimize environmental impact while enhancing energy efficiency, water conservation, and air quality. By adhering to LEED (Leadership in Energy and Environmental Design) standards, we ensure that our projects are not only durable and high-performing but also environmentally responsible.





*Energy
Efficiency*



*Water
Conservation*



*Eco-Friendly
Materials*



*Local
Sourcing*



*Light Pollution
Control*



*Indoor Air
Quality*



TAMIMI PRE ENGINEERED BUILDINGS CO.
شركة التميمي للمباني الجاهزة



+966505462461



PO Box. 172, Street # 274,
Abu Hadriyah Highway, Jubail, KSA



info@tamimipeb.com



www.tamimipeb.com

COMPANY PROFILE

Engineering Excellence. Innovating the Future.